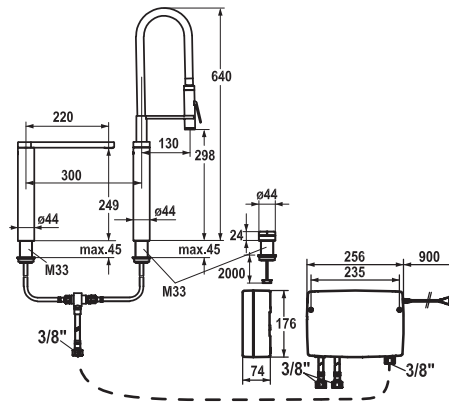


# KWC ONO touch light PRO



KWC-No.	Finish
<b>10.653.112.000FL</b>	all chrome

A 220, flexible connection hoses, mains receiver

## Kitchen with LED-technology

highflex®  
extended water system

### IntelligentControl - electronic control

- touch light PRO technology
- HighFlex patented spring hose technology
- touch'n'flow 1-2-3
- 3 preset temperatures and flow rates
- 3-hole
- TouchProtect - anti-scald protection thanks to the "double skin" principle
- Microprocessor-control
  - touch'n'flow 1: cold water, 50% flow rate can be individually adjusted and saved
  - touch'n'flow 2: warm water, 50% flow rate can be individually adjusted and saved
  - touch'n'flow 3: hot water, 50% flow rate can be individually adjusted and saved
  - with cleaning programme
  - duration of water flow - safety indication: switch off automatically after 10 minutes
  - temperature limit can be adjusted
  - hot water disinfection (5 minutes) can be adjusted
  - can be restored to factory settings
- EasyLock - a pull-out spray that easily slides back into place
- Swivel spout 360°
  - Neoperl® SLIM®
- Professional spray 360° turn
  - SprayClean - easy to clean and actively prevents limescale buildup
  - PowerClean - needle spray mode
- OptimalSpace - ample space for washing or working
- touch light PRO control unit, maintenance-free
  - up-to-date microprocessor and drive technology
  - tried-and-tested valve technology
  - incl. installation materials
  - designed for wired connection to 1 operating unit (standard)
  - , wireless connection to 1 operating unit (optional)
- Flexible connection hoses 3/8"
- Fastening by means of threaded sleeve M33 x 1.5

- Mounting hole size  $\varnothing 35$  mm
- Scope of delivery:
  - Mains receiver 100-240 V / operating voltage / cable length 900 mm
  - Control unit and wired operating unit / cable length 2000 mm
- To be ordered separately (optional or if necessary):
  - Extension set 1500 mm Z.536.352, comprising: stainless steel hose 1500 mm, 3/8" x 3/8", double nipple, sealing material
  - KWC ONO touch light PRO wireless operating unit Z.536.351.000
- Go to [www.kwc.com](http://www.kwc.com) for comprehensive information on planning, installation and operation, or get in touch with your KWC contact person.

Flow rate 9 l/min (3 bar)  
 Spray: Flow rate 4 l/min (3 bar)  
 Acoustic group I

Subject to technical, range and model changes. Dimensions in mm.